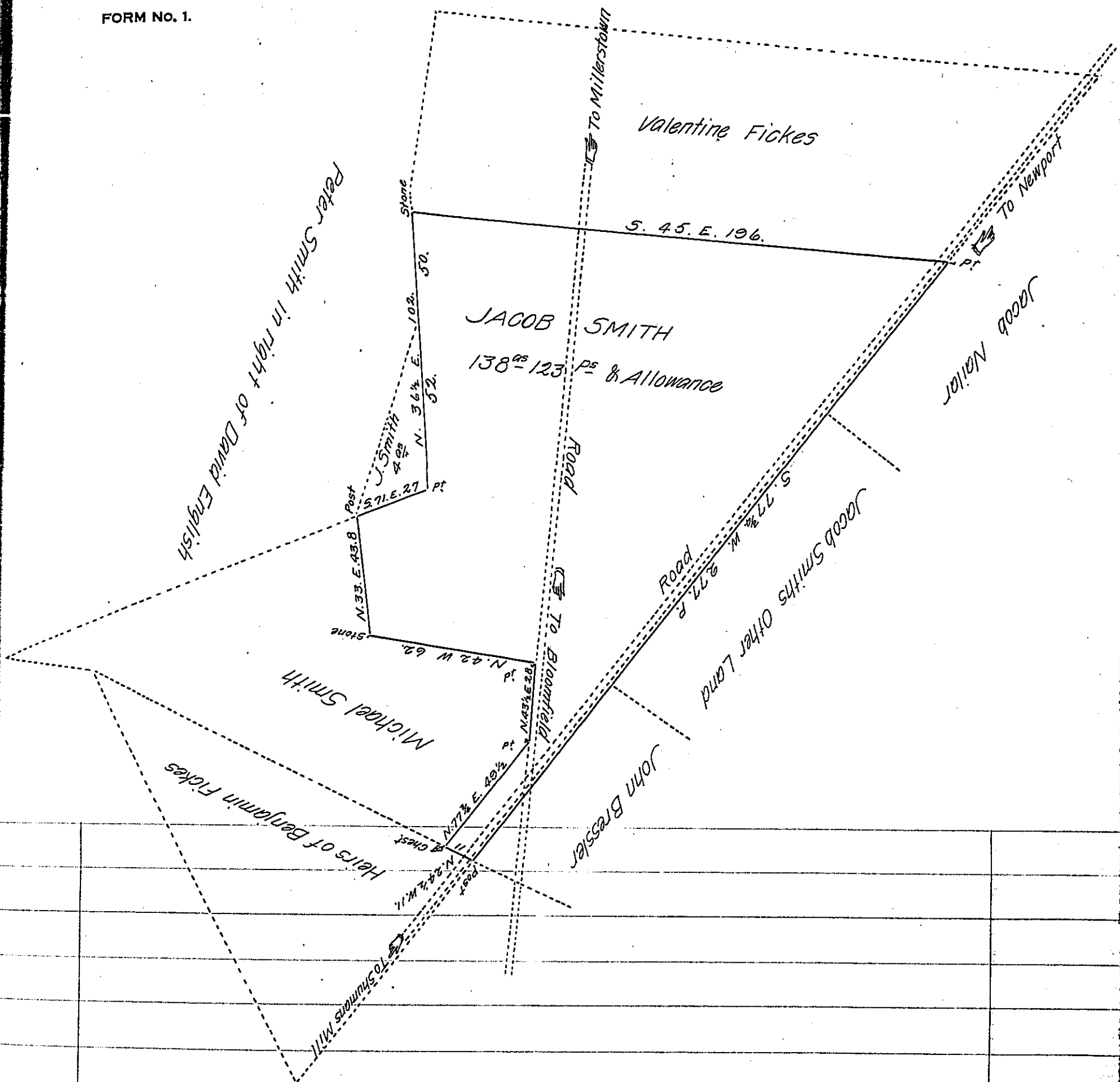


FORM NO. 1.



*Draught of Land Situate in Juniatta Township, Perry County, Containing One hundred thirtyeight Acres 123 perches & Allowance of Six per Cent for roads &c. It being part of a larger tract Containing 331<sup>ac</sup> 30 P. & allowance Originally Surveyed the 2<sup>nd</sup> day of July 1774 In pursuance of of an Order Granted John English dated September 28<sup>th</sup> 1767 N<sup>o</sup> 4421 Surveyed as above August 28<sup>th</sup> 1828.*

*P. W<sup>m</sup> Wilson D.S.*

*Gabriel Hiester Esq. S.G.*

**IN TESTIMONY** that the above is a copy of the original remaining on file in the Department of Internal Affairs of Pennsylvania, made conformably to an Act of Assembly approved the 16th day of February 1833, I have hereunto set my hand and caused the Seal of said Department to be affixed at Harrisburg, this twentyeighth day of February 1907.

*George B. Brown*  
 Secretary of Internal Affairs.